

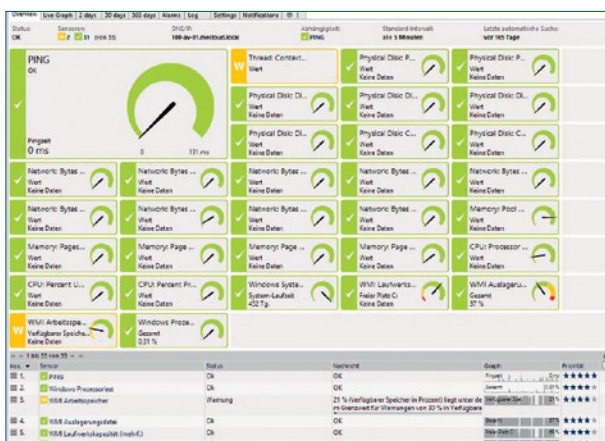


**Business  
Continuity**

# Managed Monitoring

Proactive monitoring for your entire data center - from infrastructure to application - on premise, in a box, or from the cloud

All services provided to users through IT have their specific importance for business operations. Therefore, corresponding service levels are defined based on economic significance. To enable these availabilities, all involved components must be monitored in order to intervene regulatively in non-conform events.



## Medialine Managed Monitoring

The Monitoring System is the foundation for this monitoring, which subjects the parameters to be observed to a cyclical control.

To determine what and how often to monitor, some considerations are necessary:

- How important is the service?
- What technical parameters are the basis for the service?
- Are the components within the operating system or the application?
- Who must be notified?
- Who intervenes?

Monitoring and reporting is always important when a quick reaction to disruptions with defined behavioral measures is necessary. Additionally, this can also enable quick coordination of different service providers, if, for example, a service provider is responsible for the operating system and another for the application. All those responsible for the operation of the respective components, whether customer or service provider, have this information as a basis from a professional monitoring system. Subsequently, the reporting also serves to monitor the agreed SLA and enables your IT management to document the performance provided.

## Features

- On Premise: modular virtual appliance with pre-configured plug-ins
- As a cloud service: tenant-capable, preconfigured web instance in German data center
- Desktop & mobile browser web interface for monitoring and mobile app support
- PRTG web interface for configuration
- Installed and already configured reporting instance
- E-mail notification
- Plug-ins for monitoring Windows/Linux and appliance systems
- Complete SNMP, WMI & SSH support
- Support for host dependencies and service dependencies
- Reporting tool: integrated graphs for long-term and availability evaluations
- Group & service-based management of hosts
- „Read only view account“ for customers via web interface possible
- Customer-specific configurable web interface
- Monitoring of distributed networks
- Clusterable monitoring (cluster failover solution)
- Customer-specific maps for better visibility
- Network monitoring through Netflow
- Monitoring of following manufacturers & products: Cisco, Dell, HP, IBM, NetApp, Linux, Amazon Web Services, Microsoft, VMware, Citrix, Exchange, Apache, Oracle and MS-SQL
- Open API for scripts based on: Python, Exe, DLL, Powershell, vbs and Batch

Subject to change and errors. Our general terms and conditions apply in the current version. The product description does not constitute a binding offer and is for informational purposes only. Contractual details can be found in our offers and service catalogs, which we would be happy to create for you. as of: 02/2023