

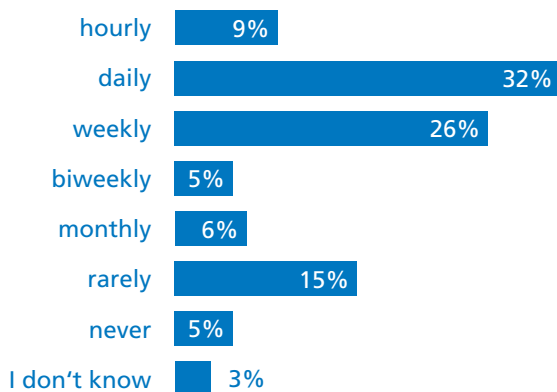


# Sophos Phish Threat

Simulated phishing attacks and training for your employees

Phishing is a booming business, and the volume of attacks has multiplied in recent years. Two-thirds of attacks are carried out through fake emails, websites, or messages. The personal data obtained is then used to, for example, empty the victims' accounts. The average cost of a security incident is over 120,000 € per company. The end-user is and remains the easiest target for cyber attacks. To act as a „human“ firewall, it is important to raise awareness and train employees.

## Frequency of phishing attacks on employees



Source: Verizon 2018 Data Breach Investigations Report

## Your employees as a firewall

Sophos Phish Threat simulates various phishing attacks in order to find vulnerabilities and educate your employees in practical trainings about the dangers of phishing emails. Sophos offers over 140 current and realistic phishing email templates that are constantly updated and kept relevant by analysts.

Employees are educated through 30 interactive training modules, which address various security topics such as password security, compliance with policies and regulations, and also suspicious emails and how to handle them.

Sophos Phish Threat provides an overview of user success in the Phish Threat dashboard, where you can easily track how your users have performed in the test campaigns, which users have failed the test, and easily add new users. This way, you can comfortably evaluate the overall risk of your company at all times.

As part of the cloud-based security console Sophos Central, Phish Threat is available to your company from a central location. Therefore, you do not need to install any hardware or software, but instead receive a hosted platform provided by Sophos with intuitive

and easy operation. To ensure the delivery of Phish Threat emails, simply add the appropriate IP addresses and any necessary domains for the Phish Threat campaign to the whitelist. This can be easily done through the Sophos Central console, which can be accessed via your web browser.

The prices for Sophos Phish Threat are based on the number of users, not the number of tests. This allows you to conduct new Phish Threat campaigns at any time and better protect your company from current threats.

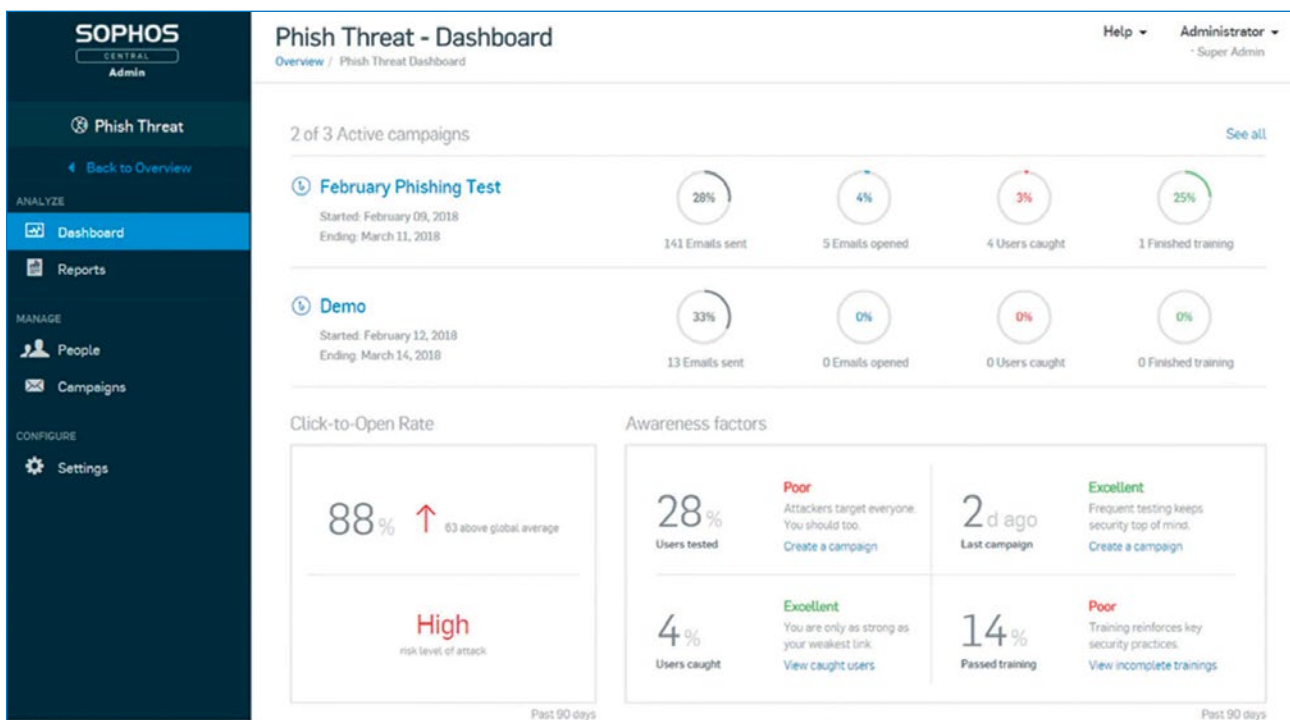


Image Phish Threat-Dashboard

### Benefits at a glance

- More than 140 practical and realistic simulations of phishing emails
- User-oriented training for deceived users
- Training results are displayed in the dashboard
- You only pay for the number of users
- You protect your company from threats

Would you like to find out more about this solution and how to maximize your business success? Contact us now at [sales@medialine.com](mailto:sales@medialine.com) and we'll find out together.

Subject to change and errors. Our general terms and conditions apply in the current version. The product description does not constitute a binding offer and is for informational purposes only. Contractual details can be found in our offers and service catalogs, which we would be happy to create for you. as of: 03/2021